

# CHILDREN'S ELECTRONIC ATV



- Suitable for 37~96 months
- Maximum user weight: 50kg
- Adult assembly required

## ***OWNER'S MANUAL***

**Read and understand this entire manual before using!**

**Please keep this manual for future reference as it contains important information.**

**Before first time use, charge the battery for at least 8-12 hours.**

On the purchase of your new Ride-On.

This ride-on car will provide your child with many miles of riding of enjoyment. To help assure you and your rider a safe ride we ask you to please read this manual carefully, and keep it for future reference.

Follow the recommendations in this manual, they are designed to improve the safety and operation of your ride-on car and it's rider.

## A

## About Your New Vehicle

**Suitable age:** 37~96 months

**Battery:** 12V7\*1 or 24V7\*1

**Charge time:** 8~12 hours

**Charger:** Input Depend on local voltage.

DC12V1000mA or 24V400mA or 28.8V500mA

**Load capacity:** under 50kg

**Size of car:** 126\*73\*65 cm

**Speed:** 5-8 km/h

**Charge time:** 8-12 hours



**WARNING:**

- **CHOKING HAZARD!** Not suitable for children under 36 months.
- **ADULT ASSEMBLY REQUIRED.**

# Parts List

C



1. Vehicle body \*1



2. Gear box \*2



3. Rear axle \*1



4. Driving wheel \*2 **2WD**  
Driving wheel \*4 **4WD**



5. Front wheel \*2 **2WD**  
(ONLY for 2WD type)



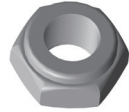
6. Spare wheel \*1



7. Handle bar\*1



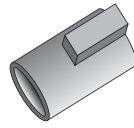
8. Ø12 Washer \*6



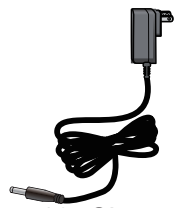
9. Lock nut \*4 **2WD**  
Lock nut \*6 **4WD**



10. Wire connector\*1



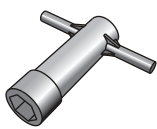
11. Bushing\*2 **2WD**  
(ONLY for 2WD type)



12. Charger\*1



13. Front axle plate\*2 **4WD**  
(ONLY for 4WD type)

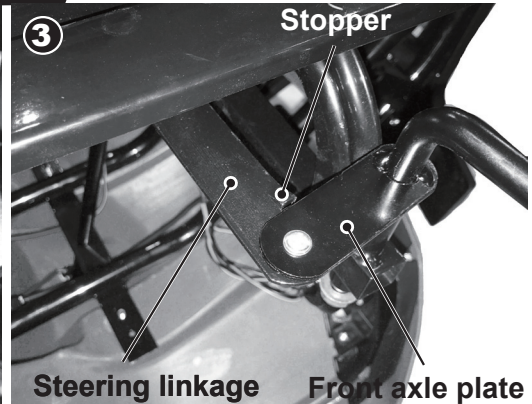
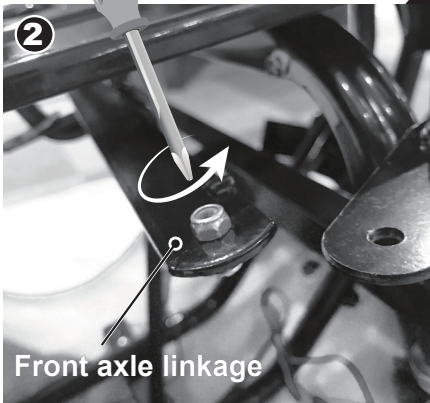
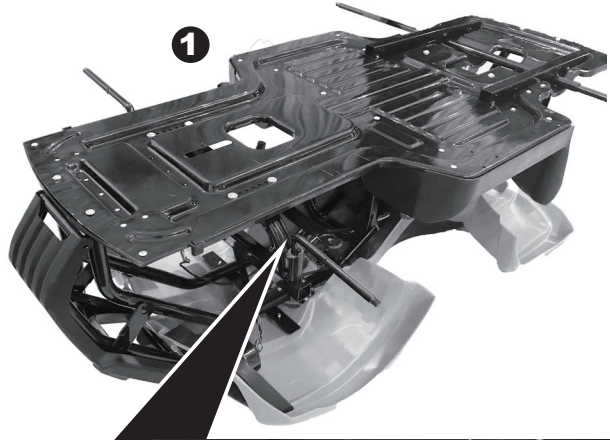


14. Spanner \*2

**HINT:** If your vehicle was Four Wheels Drive type, please follow the next page assemble the front axle

Cut off the plastic ties on the front axle with scissors.

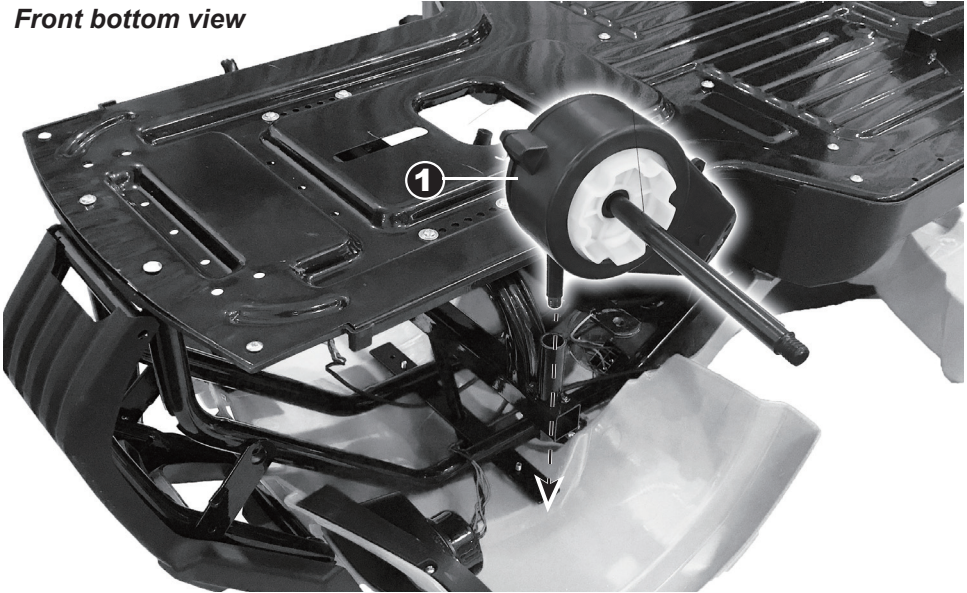
1. Turn the vehicle body downside up.



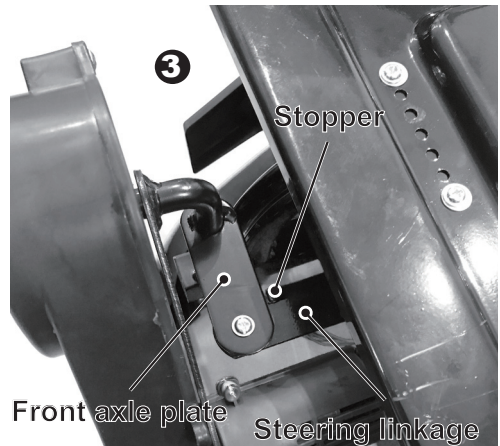
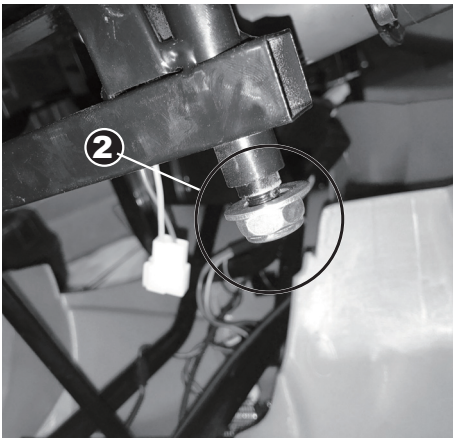
2. Remove the M5X8 screw and  $\varnothing 5$  lock nut from the front axle linkage with a screwdriver.

3. Adjust the steering linkage so that the axle is the correct position as shown, then reinsert the M5X8 screw and washer as shown, making sure the washer sits on the front axle plate, also the M5X8 screw goes through the holes on the front axle plate and steering linkage (ensure the front axle plate sits over the steering linkage as shown with the stopper, to prevent fingers becoming trapped while steering), attach the lock nut and tighten securely.

Front bottom view



1. Fit the front axle into the hole on the front axle frame.
2. Tighten a lock nut to the front axle on the opposite end.

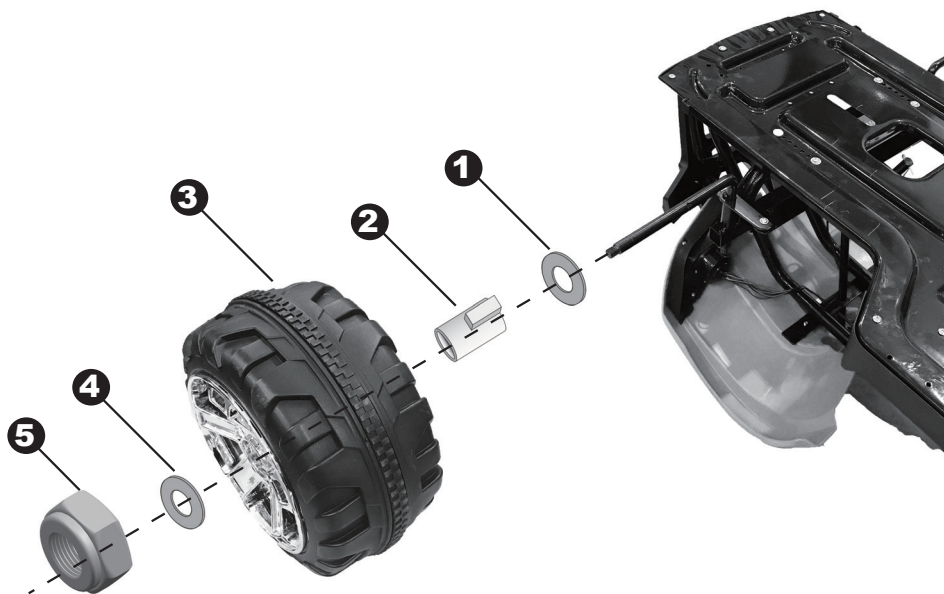


3. Adjust the front axle linkage so that the axle is the correct position as shown, then reinsert the M5X8 screw and washer as shown, making sure the washer sits on the front axle plate, also the M5X8 screw goes through the holes on the front axle plate and steering linkage (ensure the front axle plate sits over the steering linkage as shown with the stopper, to prevent fingers becoming trapped while steering), attach the lock nut and tighten securely.

## Attach the Driving wheels -1

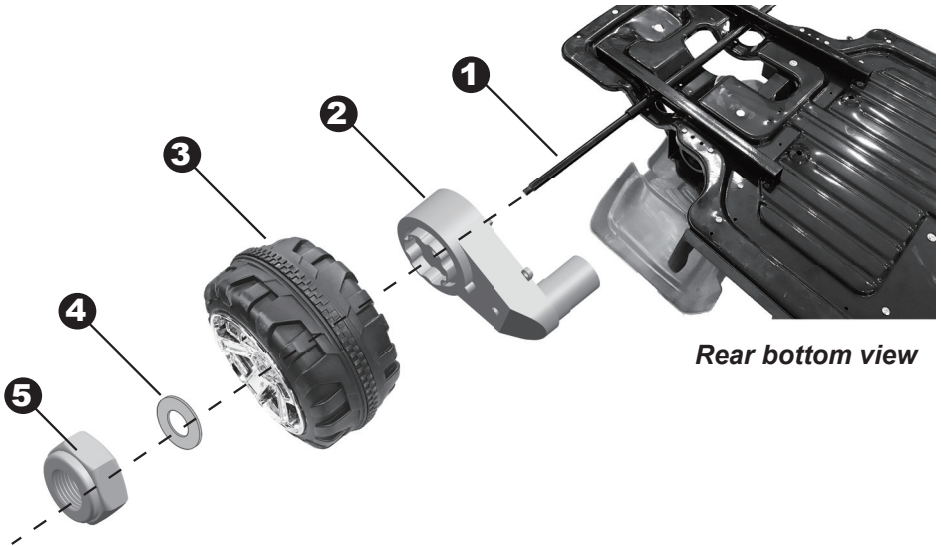
D

*Front bottom view*

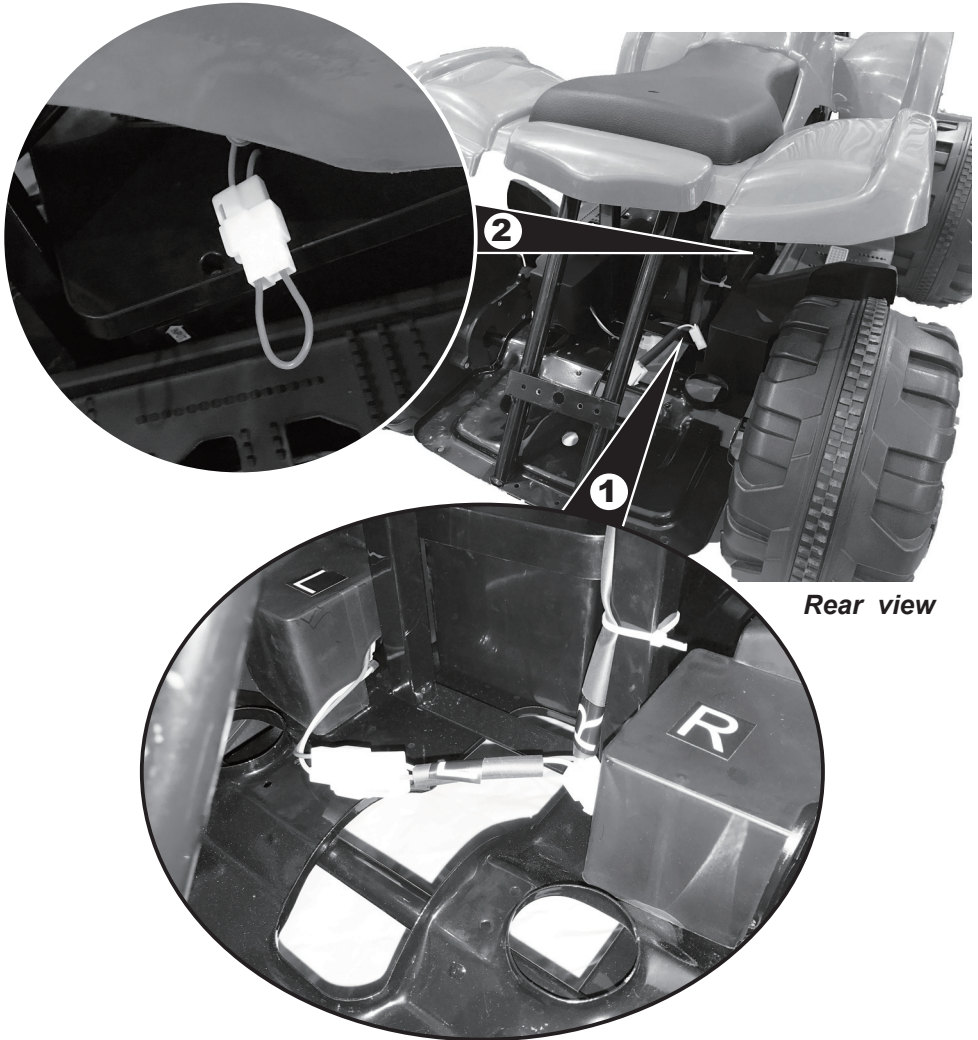


1. Fit a  $\text{Ø}12$  washer onto the front axle.
2. Slide a bushing, ring end first onto the front axle.
3. Slide a wheel onto the rear axle. and make the wheel match with the bushing.
4. Slide another  $\text{Ø}12$  washer onto the front axle.
5. Tighten a lock nut to the end of the front axle.

Repeat for the other front wheel.

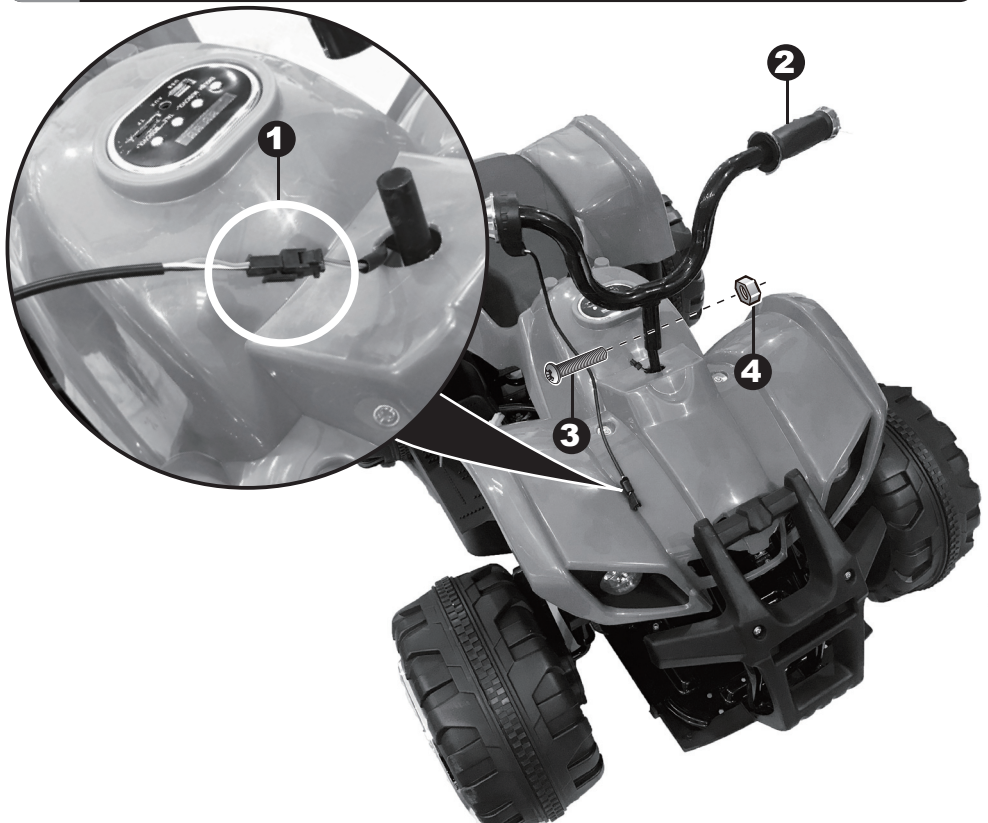
**D****Attach the Driving wheels -2***Rear bottom view*

1. Insert the rear axle into the hole on rear vehicle.
  2. Slide a gear box onto the rear axle.
  3. Slide a driving wheel onto the rear axle. and make the wheel match with the gear box.
  4. Slide a  $\text{\O}12$  washer onto the rear axle.
  5. Tighten a lock nut to the end of the rear axle.
- Repeat for the other driving wheel.



1. Plug the Motor connectors into vehicle connectors as shown
2. Plug the wire connector into the connector on the battery .

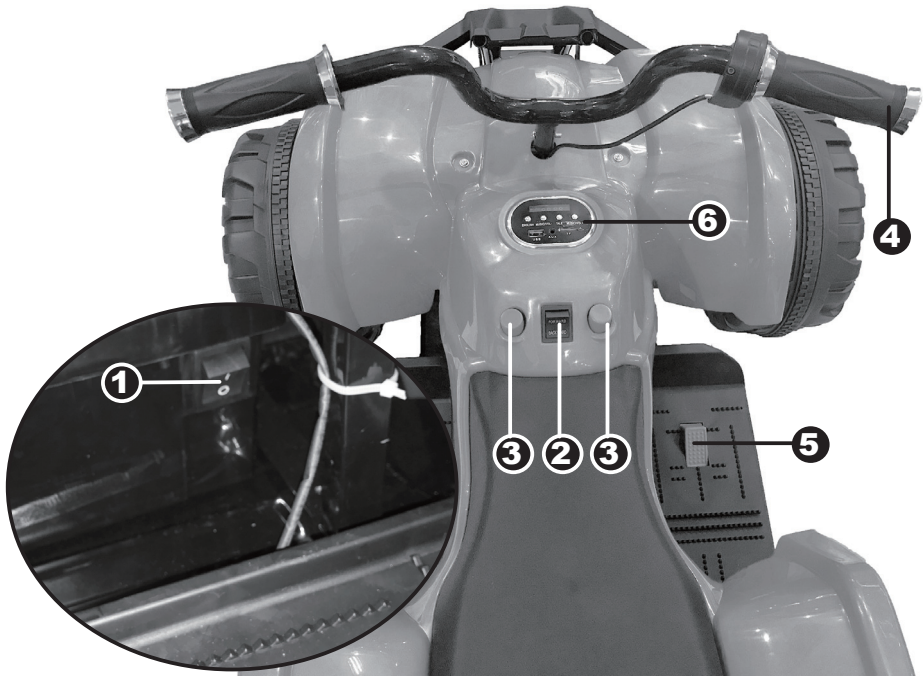




1. Plug the music connector on the handle bar into the connector on the vehicle.
2. Insert the handle bar to the end of the steering column, line up the holes and insert the M5x25 machine screw, and tighten the Ø5 nut.



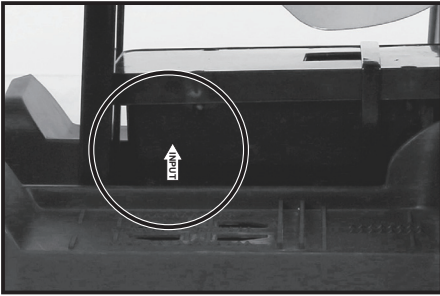
1. Insert the bolt on the spare wheel into the hole on rear vehicle.
2. Tighten a locknut on the opposite with a spanner.



1. **Power Switch:** Turns the vehicle on and off.
2. **Forward/Reverse:** Changes the direction the vehicle moves from forward to reverse.
3. **Sounds buttons:** Press for sounds playing.
4. **Throttle:** Twist the throttle to apply power the vehicle.
5. **Brake:** Press the pedal down to brake the vehicle.
6. Multi-functions Mp3 player.

## Charging

F



- The POWER SWITCH must be turned in **OFF** position when charging.
  - Before the first use, you should charge the battery for 4-6 hours. Do not recharge the battery for more than 10 hours to avoid overheating the charger.
  - When the vehicle begins to run slowly, recharge the battery.
1. Open the tank cap. Plug the charger port into the input socket.
  2. Plug the charger plug into a wall outlet. The battery will begin charging.

## Maintaining

G

- It is parents' responsibility to check main parts of the toy before using. Must regularly examine for potential hazard, such as the battery, charge, cable or cord, plug, screws are fastening enclosure of other parts and that in the event of such damage, the toy must not be until that damage had been properly removed.
- Make sure the plastic parts of the vehicle are not cracked or broken.
- Occasionally use a lightweight oil to lubricate moving parts such as wheels.
- Park the vehicle indoors or cover it with a tarp to protect it from wet weather.
- Keep the vehicle away from sources of heat, such as stoves and heaters. Plastic parts may melt.
- Recharge the battery after each use. Only an adult can handle the battery. Recharge the battery at least once a month when the vehicle Raider is not being used.
- Do not wash the vehicle with a hose. Do not wash the vehicle with soap and water. Do not drive the vehicle in rainy or snowy weather. Water will damage the motor, electric system and battery.
- Clean the vehicle with a soft, dry cloth. To restore shine to plastic parts, use a non-wax furniture polish. Do not use car wax. Do not use abrasive cleaners.
- Do not drive the vehicle in loose dirt, sand or fine gravel which could damage moving parts, motors or the electric system.
- When not using, all the electrical source should be turn off. Turn off the power switch and disconnect the battery connection.



Our products are suitable for ASTM F963; GB6675; EN71 and EN62115 standard.