

Mototec

Mpoeed



OWNER'S MANUAL

**Read and understand this entire manual before riding!
DO NOT RETURN TO STORE!**

NOTE: Manual illustrations are for demonstration purposes only. Illustrations may not reflect exact appearance of actual product. Specifications subject to change without notice.

Not recommended for children under 13 years of age.
As with all electrical products, precautions should be observed during handling and use to reduce the risk of electric shock.

SAFETY WARNINGS

WARNING: Riding the Mototec Mpoeed can be a hazardous activity. Certain conditions may cause the equipment to fail without fault of the manufacturer. Like other electric products, the Pocket Mod can and is intended to move, and it is therefore possible to lose control, fall off and/or get into dangerous situations that no amount of care, instruction or expertise can eliminate. If such things occur you can be seriously injured or die, even when using safety equipment and other precautions. **RIDE AT YOUR OWN RISK AND USE COMMON SENSE.**

This manual contains many warnings and cautions concerning the consequences of failing to maintain, inspect or properly use your Mototec Mpoeed. Because any incident can result in serious injury or even death, we do not repeat the warning of potential serious injury or death each time such a possibility is mentioned.

APPROPRIATE RIDER USE AND PARENTAL SUPERVISION

This manual contains important safety information. It is your responsibility to review this information and make sure that all riders understand all warnings, cautions, instructions and safety topics and assure that young riders are able to safely and responsibly use this product. Mototec recommends that you periodically review and reinforce the information in this manual with younger riders, and that you inspect and maintain your children's product to insure their safety.

The recommended rider age of 13 and older for the Mototec Mpoeed is only an estimate and can be affected by the rider's size, weight or skills. Any rider unable to fit comfortably on the Mototec Mpoeed should not attempt to ride it. **A parent's decision to allow his or her child to ride this product should be based on the child's maturity, skill and ability to follow rules.**

Keep this product away from small children and remember that this product is intended for use only by persons who are, at a minimum, completely comfortable and competent while operating the product.

DO NOT EXCEED THE WEIGHT LIMIT OF 170lbs (77kg). Rider weight does not necessarily mean a person's size is appropriate to fit or maintain control of the Pocket Mod.

Do not touch the motor on your Pocket Mod when in use as it can become very hot.

Refer to the section on safety for additional warnings.

ACCEPTABLE RIDING PRACTICES AND CONDITIONS

Always check and obey any local laws or regulations which may affect the locations where the Mototec Mpoeed may be used on public property. The Mototec Mpoeed is meant to be used only in controlled environments free of potential traffic hazards and not on public streets or sidewalks. Do not ride your Mototec Mpoeed in any areas where pedestrian traffic is present.

Ride defensively. Watch out for potential objects that could catch your wheel or force you to swerve suddenly or lose control. Be careful to avoid pedestrians, skaters, skateboards, scooters, bikes, children or animals who may enter your path, and respect the rights and property of others.

Do not attempt to do stunts or tricks on your Mototec Mpoeed. The Mototec Mpoeed is not made to withstand abuse from misuse such as jumping, curb grinding or any other type of stunts.

Maintain a hold on the handlebars at all times.

Never carry passengers or allow more than one person at a time to ride the Mototec Mpoeed.

Never use near steps or swimming pools.

Keep your fingers and other body parts away from the drive chain, steering system, wheels and all other moving components.

Never use headphones or a cell phone when riding.

Never hitch a ride with another product.

Do not ride the Mototec Mpoeed in wet weather and never immerse the Mototec Mpoeed in water, as the electrical and ride components could be damaged by water or create other possibly unsafe conditions.

The Mototec Mpoeed is intended for use on solid, flat, clean and dry surfaces such as pavement or level ground without loose debris such as rocks or gravel. Wet, slick or uneven and rough surfaces may impair traction and contribute to possible accidents. Do not ride the Mototec Mpoeed in mud, ice, puddles or water. Avoid excessive speeds that can be associated with downhill rides. Never risk damaging surfaces such as carpet or flooring by use of a Pocket Mototec Mpoeed indoors.

Do not ride at night or when visibility is impaired.

PROPER RIDING ATTIRE

Always wear proper protective equipment such as an approved safety helmet, elbow pads and kneepads. A helmet may be legally required by local law or regulation in your area. Always wear shoes, never ride barefooted or in sandals, and keep shoelaces tied and out of the way of the wheels, motor and drivesystem.

USING THE CHARGER

The charger supplied with the Mototec Mpoeed should be regularly examined for damage to the cord, plug, enclosure and other parts, and in the event of such damage, the product must not be charged until the charger has been repaired or replaced.

Use only with the recommended charger.

Use caution when charging.

The charger is not a toy. Charger should be operated by an adult.

Do not operate charger near flammable materials.

Unplug charger and disconnect from the battery operated product when not in use.

Always disconnect from the charger prior to wiping down and cleaning your Mototec Mpoeed with liquid.

FAILURE TO USE COMMON SENSE AND HEED THE ABOVE WARNINGS INCREASES RISK OF SERIOUS INJURY. USE WITH APPROPRIATE CAUTION AND SERIOUS ATTENTION TO SAFE OPERATION.

BEFORE YOU BEGIN

Remove contents from box. Remove the plastic separators that protect the components from damage during shipping. Inspect the contents of the box for scratches in the paint, dents or kinked cables that may have occurred during shipping. Because the Mototec Mpoed is 95 percent assembled and packed at the factory, there should not be any problems, even if the box has a few scars or dents.

Estimated Assembly and Set-Up Time

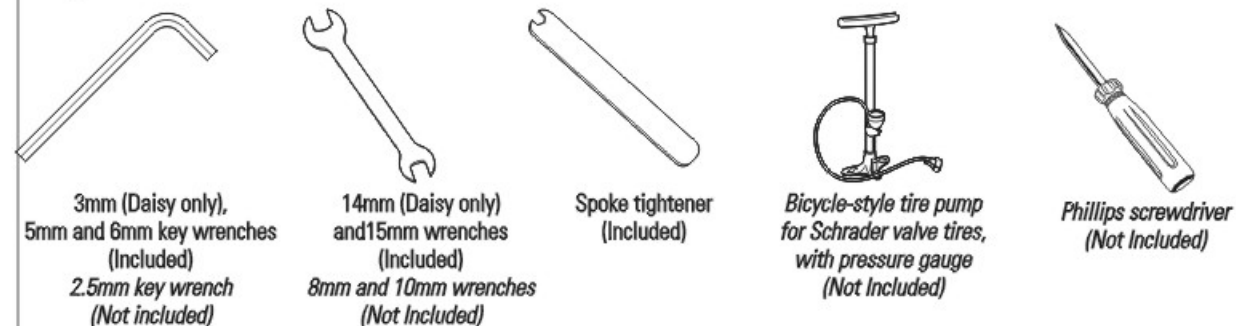
Mototec recommends assembly by an adult.

Allow up to 15 minutes for assembly.

Allow up to 18 hours for initial charge (see page 3 for charging information).



Required Tools



WARNING:
DO NOT USE NON-MOTOTEC PRODUCTS WITH YOUR MOTOTEC MOPED. The Mototec Mpoed has been built to certain Mototec design specifications. The original equipment supplied at the time of sale was selected on the basis of its compatibility with the frame, fork and all other parts. Certain aftermarket products may or may not be compatible.

ASSEMBLY AND SET-UP

Charging the Battery

Your Mototec Mpoed may not have a fully charged battery; therefore it is a good idea to charge the battery prior to use.

- Initial charge time: 18 hours
- Recharge time: up to 12 hours depending on the level of depletion
- Run time: Up to 30 minutes of continuous ride time
- Average battery life: 250 charge/discharge cycles



1 Turn power **OFF** before charging. Plug the charger into the charger port.
Note: Be sure to properly align the groove on the charger input plug with the corresponding socket on the case; otherwise, no charging action will occur.

2 Plug the charger into a wall outlet. If the lights on charger do not light up, check the power to the outlet. If necessary, try a different outlet.

Note: The pressurized air supplies found at gasoline stations are designed to inflate high-volume automobile tires. If you decide to use such an air supply to inflate your Pocket Mod tires, first make sure the pressure gauge is working, then use very short bursts to inflate to the correct PSI. If you inadvertently over-inflate the tires, release the excess pressure immediately.

WARNING:
Rechargeable batteries are only to be charged under adult supervision. Always disconnect your Mototec Mpoed from the charger before cleaning with liquid.

Note: If your charger does not look like the one illustrated, your unit has been supplied with an alternative charger. The specifications and charging procedure would not change.

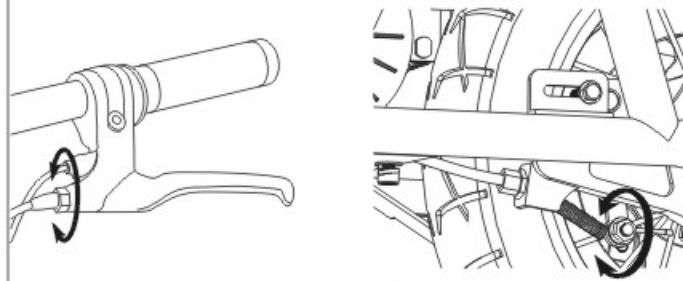
The charger has a small window with one LED or two LEDs to indicate the charge status. Refer to the illustration on the charger unit for the actual "charging" and "charged" status indications for your model charger.

Chargers have built-in over-charge protection to prevent battery from being over-charged.

REPAIR AND MAINTENANCE

□ Adjusting the Brakes

Tools required: 10mm wrench

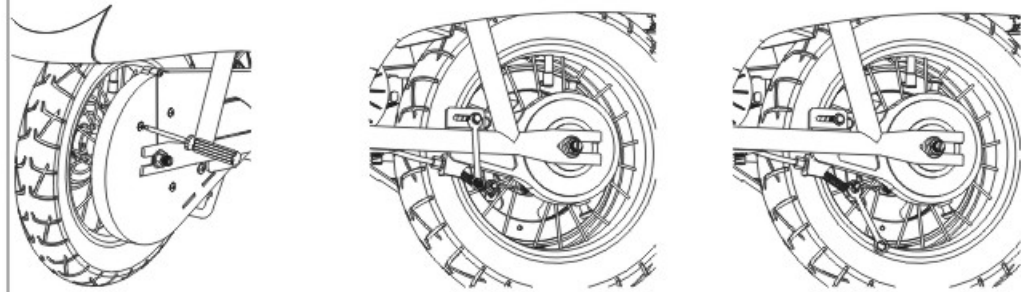


1 To adjust the play, thread the brake lever adjuster on the hand brake in or out 1/4 to 1/2 turn until the desired brake adjustment is attained. Most adjustments are complete at this step. If brake still needs further adjustment, proceed to step 2.

2 If brake is too tight or has too much slack, use a 10mm wrench to loosen the nut for additional adjustment on the brake cable on the rear wheel. Securely tighten nut when done.

□ Chain and Rear Tire Replacement

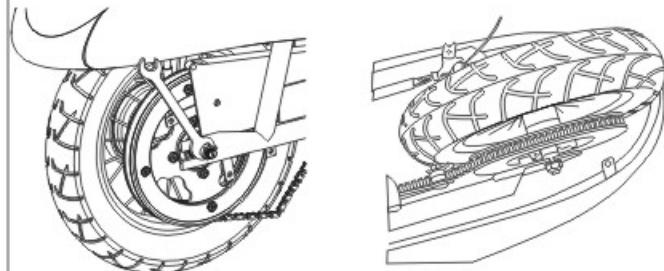
Tools required: Phillips screwdriver, 10mm wrench, two (2) 8mm wrenches, and two (2) 15mm wrenches.



1 With a Phillips screwdriver, remove the screws that secure the chain guard. Remove chain guard.

2 With two 8mm wrenches, loosen brake housing anchor and disconnect. Keep the spacer and washers together

3 With a 10mm wrench, loosen the brake cable anchor and disconnect the cable.



4 With two 15mm wrenches, loosen the axle. Slide the wheel forward to loosen the chain and remove the wheel. Note the sequence of the hardware.
Note: Your hands will get greasy doing this.

5 Install the new chain or wheel by slipping the chain around the axle. Slide the axle into the slots on the frame. Slide the wheel forward and maneuver the chain onto the rear sprocket, motor shaft and chain tensioner.

⚠ WARNING: The brake is capable of skidding the tire and throwing an unsuspecting rider. Practice in an open area free from obstacles until you are familiar with the brake function. Avoid skidding to a stop as this can cause you to lose control or damage the rear tire.

Note: The brake lever contains a safety switch to cut power to the motor when the brake is applied. In an emergency, applying the brake will always stop the product from moving. Do not disable or replace this lever with anything other than a genuine Razor replacement part.

Note the sequence of the hardware:

Right Side (Throttle)

Safety hook
3/8 Axle locknut

Left Side (Brake)

Spacer
Safety hook
3/8 Axle locknut

REPAIR AND MAINTENANCE

□ Battery Care and Disposal

Do not store the battery in temperatures above 75° or below -10° F.



CONTAINS SEALED LEAD ACID BATTERIES. BATTERIES MUST BE RECYCLED.

Disposal: Your Mototec product uses sealed lead-acid batteries which must be recycled or disposed of in an environmentally safe manner. Do not dispose of a lead-acid battery in a fire. The battery may explode or leak. Do not dispose of a lead-acid battery in your regular household trash. The incineration, land filling or mixing of sealed lead-acid batteries with household trash is prohibited by law in most areas. Return exhausted batteries to a federal or state approved lead-acid battery recycler or a local seller of automotive batteries. If you live in Florida or Minnesota, it is prohibited by law to throw away lead-acid batteries in the municipal waste stream.

□ Charger

The charger supplied with the electric scooter should be regularly examined for damage to the cord, plug, enclosure and other parts and in the event of such damage, the product must not be charged until it has been repaired or replaced.

Use ONLY with the recommended charger.

□ Wheels

Wheels and drive system are subject to normal wear and tear. It is the responsibility of the user to periodically inspect wheels for excess wear and adjust and replace drive train components as required.

□ Replacement Parts

The most frequently requested replacement parts are available for purchase at some Mototec retail partners.

⚠ WARNING: If a battery leak develops, avoid contact with the leaking acid and place the damaged battery in a plastic bag. Refer to the disposal instructions at left. If acid comes into contact with skin or eyes, flush with cool water for at least 15 minutes and contact a physician.

⚠ WARNING: Battery posts, terminals and related accessories contain lead and lead compounds. **Wash your hands after handling.**

TROUBLESHOOTING GUIDE

Problem	Possible Cause	Solution
Product does not run	Undercharged battery	Charge the battery. A new battery should be charged for at least 18 hours before using the product for the first time and up to 12 hours after each subsequent use. Check all connections. Make sure the charger port is tightly plugged into the charging port on the Pocket Mod, and that the charger is plugged into the wall.
	Loose wires or connectors	Check all wires and connectors to make sure they are tight.
Product suddenly stopped working while in use	Burned out fuse	The fuse will burn out and automatically shut off the power if the motor is overloaded. An excessive overload, such as too heavy a rider or too steep a hill, could cause the motor to overheat. Replace the fuse with a new one of equal amperage. Correct the conditions that caused the fuse to burn out and avoid repeatedly burning out fuse.
	Motor or electrical switch damage	Contact your local Mototec authorized service center for diagnosis and repair.
Short run time (less than 15 minutes per charge)	Undercharged battery	Charge the battery. A new battery should have been charged for at least 18 hours before using the product for the first time and up to 12 hours after each subsequent use. Check all wires and connectors. Make sure the battery connector is tightly plugged into the charger connector and that the charger is plugged into the wall.
	Tires are not properly inflated	The tires are inflated when shipped but invariably will lose some pressure between the point of manufacturing and your purchase.
	Brakes are not adjusted properly	Refer to adjusting the brakes instructions on page 5.
Product runs sluggishly	Riding conditions are too stressful	Use only on solid, flat, clean and dry surfaces such as pavement or level ground.
	Tires are not properly inflated	The tires are inflated when shipped but they invariably will lose some pressure between the point of manufacturing and your purchase.
	Product is overloaded	Make sure you do not overload the product by allowing more than one rider at one time, exceeding the 170 lb. maximum weight limit, going up a hill or towing objects behind the product.
	Brakes are not adjusted properly	
Sometimes the product doesn't run, but other times it does	Loose wires or connectors	Check all wires around the motor and all connectors to make sure they are tight.
	Motor or electrical switch damage	Contact your local Mototec authorized service center for diagnosis and repair.
Product makes loud noises or grinding sounds	Chain is too dry	Apply a lubricant such as 3 in 1™ or Tri-Flow™ to the chain.

DO NOT RETURN TO STORE

For service, Create Online, Trouble Ticket

[Http://support.bigtoysusa.com](http://support.bigtoysusa.com)